

Remuera Heritage Walk 3

1. Guisnes Court, 532 Remuera Road

Designed by the architect Roy Keith Binney for himself and his mother in 1914 in the Neo-Georgian and Arts and Crafts style. What is the 'Neo-Georgian' style of architecture?

2. Hellaby House (former), 519 Remuera Road

Built in 1920 and occupied by Frederick and Mavis Hellaby until 1957. Developers removed the Hellaby House and relocated it to Karaka. What product is the Hellaby family famous for?

3. McLaren Garage (former), 586-592 Remuera Road

The garage, built in 1926 and run by Arthur Taylor, was sold in 1936 to Les McLaren, Bruce McLaren's father. The McLarens owned the premises until Bruce's death in 1970. Can you find the plaque?

4. Thompson's Building (former), 561 Remuera Road

Built in 1917 for fruiterer Arthur Herbert Thompson. It was a Harvey Furnishings store from early 1980s. What is it used for today?

5. Upland Village Historic Heritage Area, 541-597 Remuera Road

The Upland Village was built from 1915 to 1938, designed by notable architects including Horace L. Massey and Frederick A. Browne. In 2021 the Auckland Council's Plan Change 31 added Upland Road Shops as a Historic Heritage area. Look at the different design and materials of the facades on the buildings.

6. Fletcher Residence (former), 21 Upland Road

Designed in 1927 by Roy Lippincott for Sir James Fletcher. Lippincott's work was influenced by American architect Frank Lloyd Wright. What other well-known Auckland buildings did Lippincott design?

7. 45 Upland Road

Designed by Horace Lovell Massey, a WW1 serviceman and notable architect in the 1920s. What Remuera church did Horace Massey design?

8. Ōrākei Basin, 143-149 Upland Road

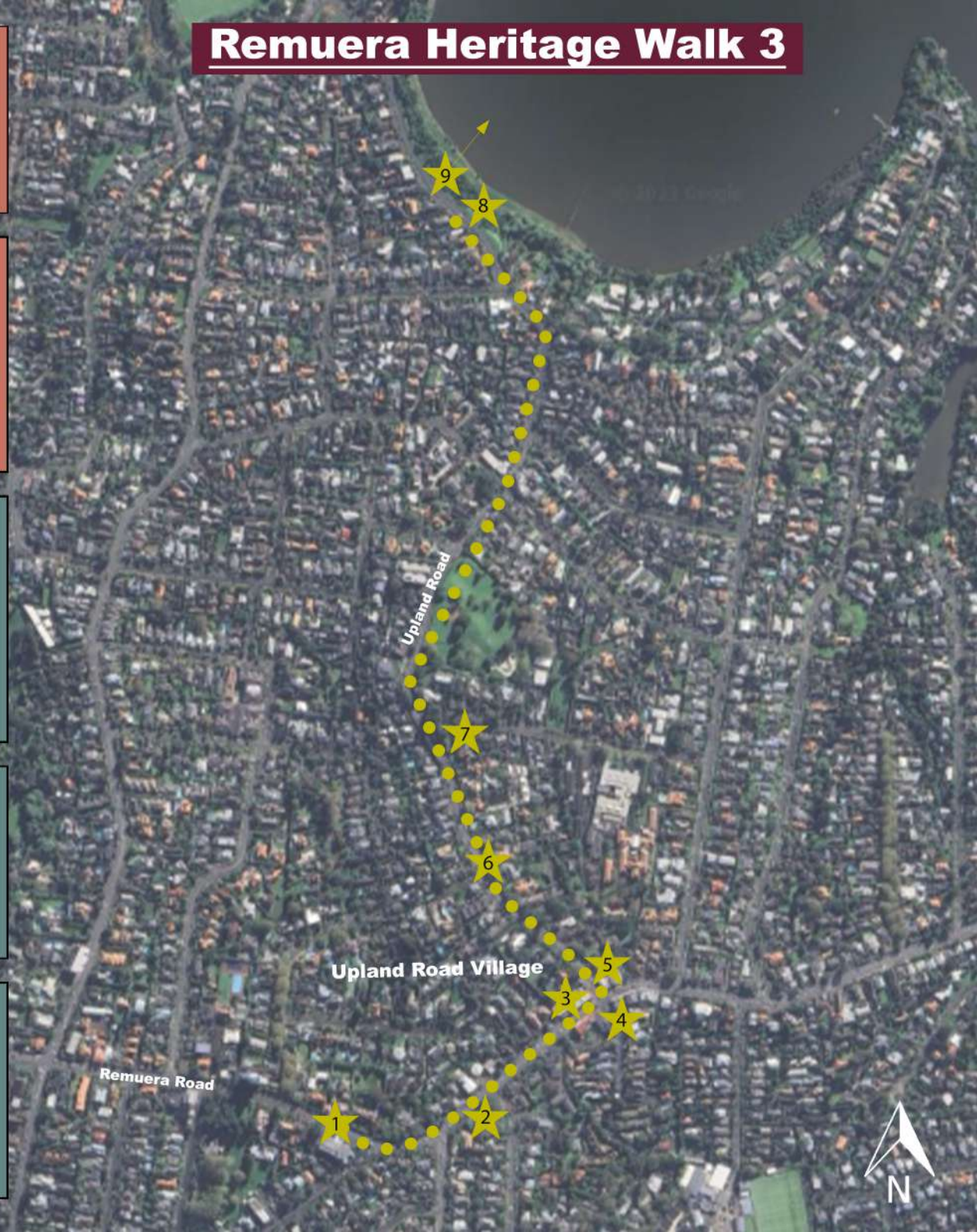
The basin is a tidal lagoon, located in a volcanic crater, and used for a range of water sports from the boat ramp. It's connected to the Hobson Bay Walkway and Orakei Train Station. Take a look around this beautiful basin.

9. Pourewa Māra Kai Gardens, Kepa Road

Look over the basin towards Ōrākei and see the garden completed in June 2020 and run by the Ngāti Whātua Ōrākei Reserves Board. The design incorporates the mauri, wairua, tikanga and whakapapa of the land with a traditional sustainable horticultural and agricultural practice. What do mauri, wairua, tikanga and whakapapa mean?

Colour Key:

- Other Features e.g. gates, memorial seat
- Commercial Buildings
- Gardens, Maunga and Basin
- Houses



Remuera Heritage Walk 3



1. 532 Remuera Road

<https://www.heritage.org.nz/list-details/598/Guisnes%20Court>



2. 519 Remuera Road

<https://remueraheritage.org.nz/story/hellaby-houses/>



3. 586-592 Remuera Road

[https://www.heritage.org.nz/list-details/7656/McLaren%20Garage%20\(Former\)](https://www.heritage.org.nz/list-details/7656/McLaren%20Garage%20(Former))



4. 561 Remuera Road

<https://remueraheritage.org.nz/story/561-remuera-road-remuera-formerly-harvey-furnishings/>



5. Upland Road Village 541-597 Remuera Road

<https://remueraheritage.org.nz/news/remuera-heritage-2021-annual-report/>



6. 21 Upland Road

<https://remueraheritage.org.nz/story/Roy-Lippincott-architects-of-Remuera/>



7. 45 Upland Road

<https://remueraheritage.org.nz/story/Horace-Lovell-Massey-architects-of-Remuera/>



8. Ōrākei Basin 143-149 Upland Road

<https://www.aucklandcouncil.govt.nz/parks-recreation/get-outdoors/aklpaths/Pages/path-detail.aspx?ItemId=161>



9. Pourewa Māra Kai Gardens on Kepa Road, Ōrākei

<https://ngatiwhatuorakei.com/toi-taiao/pourewa/>



BROUGHT TO YOU BY AUCKLAND COUNCIL
AUCKLAND
HERITAGE FESTIVAL



Auckland Heritage Festival 2023

We are pleased to announce the theme **Peace, Love and Protest** for Auckland Heritage Festival 2023 (23 September to 8 October).



REMUERA
HERITAGE