

Remuera Heritage Walk 1

1. Ōhinerau/Mt Hobson Memorial Seat, Remuera Road

In 1948 members of the Remuera Garden Club gathered daffodil bulbs for a mass planting in memory of the men from Remuera who lost their lives in World War I and II. 'What does the seat plaque say?'

2. Ōhinerau/Mt Hobson Volcanic Cone and Pa

Ōhinerau means the place of Hinerau, goddess of whirlwinds. In 1964 three reservoirs and 27 midden sites were recorded during a survey. Can you find any terraces, ditches, pits and midden?

3. Glenesk (former), 164 Remuera Road

Glenesk was built in the early 1900s, and converted in 1957 by the Salvation Army to The Grange Girls Home. The large home was demolished in the 1980s to make way for more intensive housing. What replaced Glenesk?

4. Dr Talbot's House (former), 172 Remuera Road

Built in 1918 by the architect James Lloyd in the English Arts and Crafts style, the house has a Heritage NZ Category 2 listing. Look up Heritage NZ website and search properties in your neighbourhood.

5. Barochan, 226 Remuera Road

Barochan was designed by architect John M. Walker and built in 1916, and extended in 1935 by architect William Gummer. Horace Massey designed the entrance gates. What is the 'Arts and Craft' style of architecture?

6. Remuera Primary School World War One Memorial Gates, 25 Dromorne Road

Graham Harvey was the architect of the gates erected in 1922. Many soldiers and nurses are remembered on the gates, can you recognise any of the surnames?

7. Remuera Bowling Club, 6 Market Road

The club was formed in 1895 and the clubroom opened in 1906. Do you know of any other bowling clubs in Auckland?

8. Aachen House, 39 Market Road

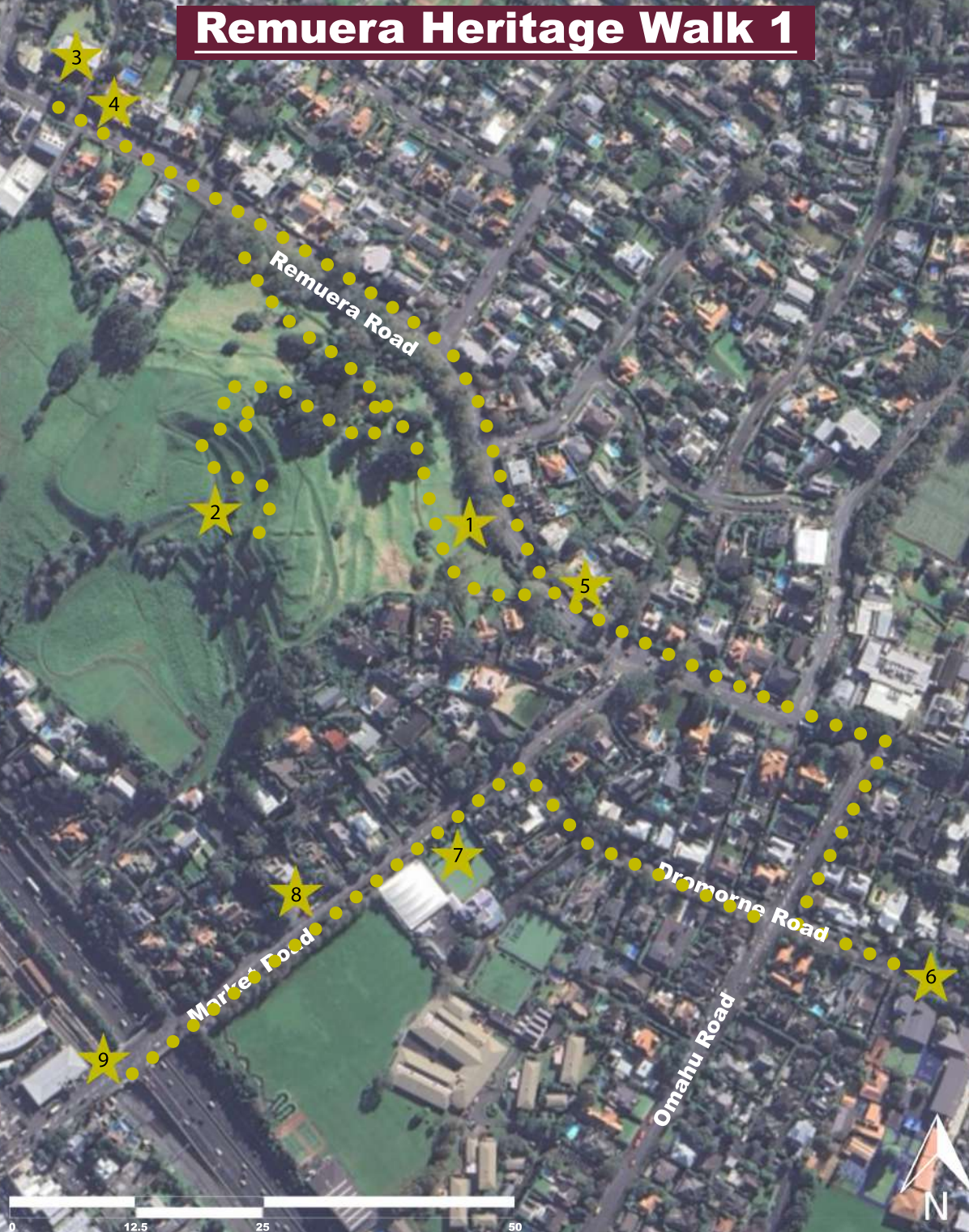
Built in 1905, and owned by the Dilworth Trust Board for 100 years. Arthur Ferneyhough, a well-known architect, designed the house. What wood do you think the house is clad in?

9. Remuera Railway Station and Signal Box, Market Road

Was built in 1907 and has a Heritage NZ Category 1 listing. It is recognised as one of the most significant remaining suburban railway buildings in New Zealand. What do you think the Signal Box was used for?

Colour Key:

- Other Features e.g. gates, memorial seat
- Commercial Buildings
- Gardens, Maunga and Basin
- Houses



Remuera Heritage Walk 1



1. Ōhinerau/Mt Hobson Memorial Seat, Remuera Road

<https://remueraheritage.org.nz/story/memorial-seat-on-ohinerau-mt-hobson/>



2. Ōhinerau/Mt Hobson Volcanic Cone and Pa

<https://remueraheritage.org.nz/story/ohinerau-mt-hobson-its-creation-and-history/>



3. Glenesk, 164 Remuera Road

<https://remueraheritage.org.nz/story/glenesk-164-remuera-road/>



4. Dr Talbot's House (former) 172 Remuera Road

[https://www.heritage.org.nz/list-details/602/Dr%20Talbot's%20House%20\(Former\)](https://www.heritage.org.nz/list-details/602/Dr%20Talbot's%20House%20(Former))



5. Barochan, 226 Remuera Road

<https://remueraheritage.org.nz/story/barochan-226-remuera-rd/>



6. Remuera Primary School World War One Memorial Gates, 25 Dromorne Road

<https://remueraheritage.org.nz/story/ww1-kate-evelyn-wright-22-11/>



7. Remuera Bowling Club, 6 Market Road

<https://www.remuerabowls.co.nz/history>



8. Aachen House, 39 Market Road

<https://remueraheritage.org.nz/story/aachen-house-39-remuera-road-sold-july-2022/>



9. Remuera Railway Station and Signal Box, Market Road

<https://remueraheritage.org.nz/story/Remuera-railway-station/>



BRUGHT TO YOU BY AUCKLAND COUNCIL
AUCKLAND
HERITAGE FESTIVAL

Auckland Heritage Festival 2023

We are pleased to announce the theme **Peace, Love and Protest** for Auckland Heritage Festival 2023 (23 September to 8 October).

REMUERA
HERITAGE