

REMUERA HERITAGE INC.  
APPLICATION FOR MEMBERSHIP

First Name \_\_\_\_\_

Surname \_\_\_\_\_

Postal Address \_\_\_\_\_

\_\_\_\_\_

\_\_\_\_\_

Email Address \_\_\_\_\_

Phone Number \_\_\_\_\_

Choose Membership Type: (Please tick applicable)

<input type="radio"/> <b>Individual Membership</b> One Adult plus any children up to 18 years of age.	<b>\$25</b>
<input type="radio"/> <b>Family Membership</b> Two Adult members plus any children up to 18 years of age.	<b>\$40</b>
<input type="radio"/> <b>Corporate Membership</b> Businesses, organisations, groups, companies or associations.	<b>\$100</b>
<b>I would like to make a Donation of:</b> Your donation will assist us to continue to promote heritage in Remuera.	\$ _____
<b>TOTAL ENCLOSED</b>	\$ _____

Forward payment to:  
Remuera Heritage Inc.  
PO Box 28 556, Remuera, Auckland 1541

Or direct credit to our bank account:  
06 0257 0198761 00



Join Remuera Heritage to help us  
recognise, appreciate, share, preserve  
and record our local heritage.

Remuera Heritage Inc.  
P O Box 28 556, Remuera, Auckland 1541

[www.remueraheritage.org.nz](http://www.remueraheritage.org.nz)

Follow us on Facebook:  
[www.facebook.com/remueraheritage](https://www.facebook.com/remueraheritage)

For further information email us at:  
[info@remueraheritage.co.nz](mailto:info@remueraheritage.co.nz)

Supported by



LJ KEYS GROCERY STORE, 1910.  
COURTESY SIR GEORGE GREY SPECIAL COLLECTIONS, AUCKLAND LIBRARIES.



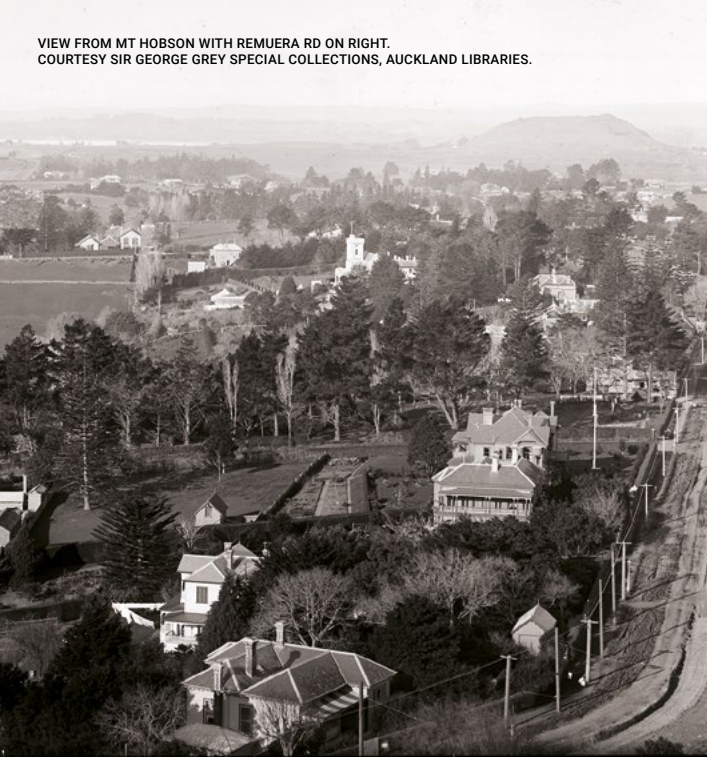
# REMUERA HERITAGE

STORYTELLING & CELEBRATING  
OUR PAST FOR THE FUTURE



REMUERA BRANCH, AUCKLAND PUBLIC LIBRARY C1915.  
COURTESY SIR GEORGE GREY SPECIAL COLLECTIONS, AUCKLAND LIBRARIES.

VIEW FROM MT HOBSON WITH REMUERA RD ON RIGHT.  
COURTESY SIR GEORGE GREY SPECIAL COLLECTIONS, AUCKLAND LIBRARIES.



In 1840, the young adventurer John Logan Campbell scrambled through the high fern to the summit of Mount Hobson. He gazed in awe at the splendid panorama, and set his heart on purchasing land on the sunny Remuera slopes. The Maori owners, however, had no intention of parting with this most prized and fertile possession.

The lands Campbell so enthusiastically admired in 1840 were gradually sold, subdivided and developed, and Remuera became a suburb of Auckland.

In the twenty-first century, Remuera remains one of Auckland's most sought-after suburbs, with a rich architectural and historical heritage.

Although many fine early Remuera houses survive, many are being lost to redevelopment. Equally, some natural volcanic features, such as Maunga Rahiri (Little Rangitoto), have been largely quarried away.

LOOKING ACROSS AT THE REMUERA PUBLIC LIBRARY C1926-9.  
COURTESY SIR GEORGE GREY SPECIAL COLLECTIONS, AUCKLAND LIBRARIES.



REMUERA POST OFFICE C1914. COURTESY OF NATIONAL BANK, REMUERA BRANCH.

## AIMS OF REMUERA HERITAGE

Remuera Heritage was established in 2007. The society's purpose is to:

- Share Remuera's past and present
- Promote and protect Remuera's heritage character
- Collect and conserve pictorial and written records
- Gather oral histories
- Foster an awareness and appreciation of Remuera's natural and cultural heritage

Members enjoy opportunities to visit heritage sites and buildings, hear guest speakers and attend a variety of heritage related events. The Society participates in Auckland Council's annual Heritage Festival to celebrate and share our city's rich heritage.

“ Ah! I shall never forget the feelings of gratified amazement with which I gazed on the wonderful panorama which lay revealed to my sight for the first time on that now long ago day. 'Age cannot wither nor time stale' its infinite beauty in my eyes. ”

John Logan Campbell (1881). *Poenamo: Sketches of Early Days in New Zealand*. Williams and Norgate, London.