

WILSON'S BEACH AND JETTY

BRUCE RENSHAW



REMUERA
HERITAGE

Wilson's Beach 1918

Auckland Libraries Heritage Collections A11230. Photographer W T Wilson



Remuera Land And Building Company.

Auckland Star, 26 July 1881

JETTY AT REMUERA.—Mr F. A. White forwarded an application on behalf of the Remuera Land and Building Company (Limited) for the erection of a jetty at the foot of Victoria Avenue, late Hobson Road, Remuera. The writer stated that should substantial assistance be granted by the Board, the work would be proceeded with at once, arrangements having been made to ply one of the Ferry Company's steamers for the convenience of residents in the Remuera district.—Referred to the Works and Endowment Committee.

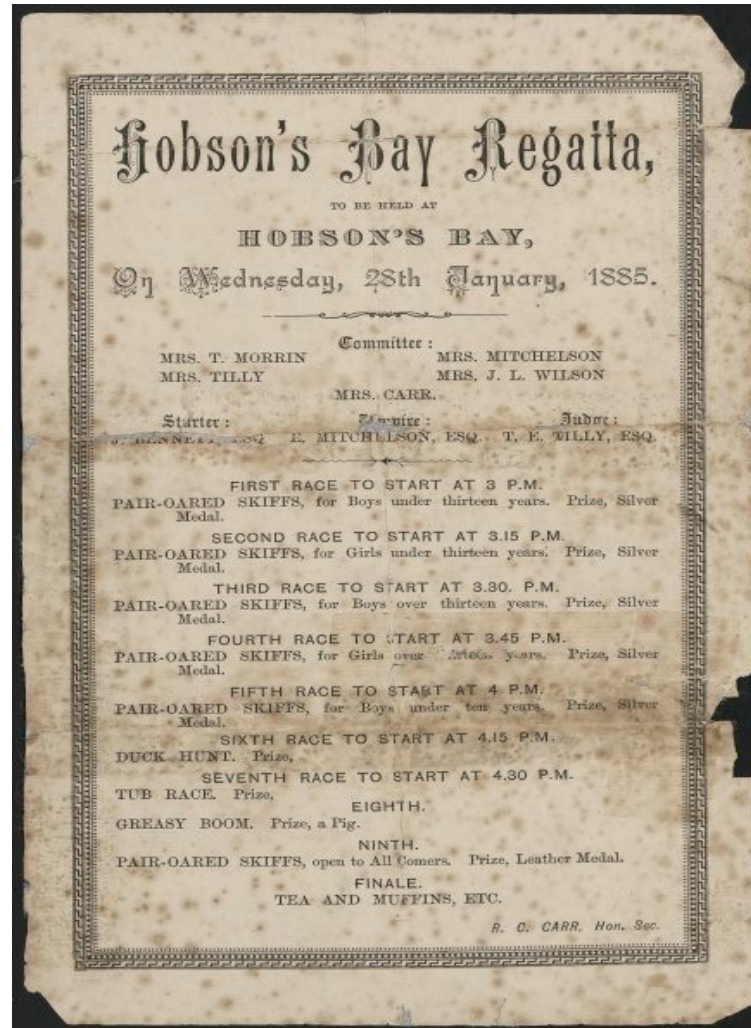
The late Captain Tilly from the Royal Navy, Commander of the Melanesian Mission ship "Southern Cross" and agent of the Mission in Auckland.

Auckland Libraries Heritage Collections AWNS-19000803-4-6



Hobson's Bay Regatta

Alexander Turnbull Library.Eph-A-ROWING-1885-01



HOBSON'S BAY REGATTA. AUCKLAND STAR, 29 JANUARY 1885

This little suburban event took place yesterday afternoon, and afforded considerable sport to several hundreds of onlookers. The results of the races are as under :—

PAIR-OARED SKIFF RACE, for girls over 13. Prize, silver medal.—Buttercup: Ella Carr (stroke), Minnie Wilson, L. Wilson (cox).

PAIR-OARED SKIFF RACE, for boys under 10. Prize, silver medal.—Buttercup: Edwin Mitchelson (stroke), Fred. Bennett, Cecil Tilly (cox).

PAIR OARED SKIFF RACE, for boys over 13. Prize, silver medal.—Buttercup: J. Tilly (stroke), A. Carr, S. Somerfield (cox.)

LADIES' RACE. Prize, 2 handsome bronze vases.—Daisy: Mrs T. Morrin (stroke), Mrs J. L. Wilson, L. Wilson (cox).

WALKING THE GREASY BOOM. Prize, a pig.—L. Wilson was the winner.

TUB RACE; prize, value 10s.—J. Tilly.

DUCK HUNT; prize, value 10s.—J. Tilly officiated as duck, and A. Wilson as drake. Tilly having evaded capture, carried off the prize.

Hobson Bay Bordering North Remuera. March 1911.
H Winkelmann. Auckland Libraries Heritage Collections 1-W61



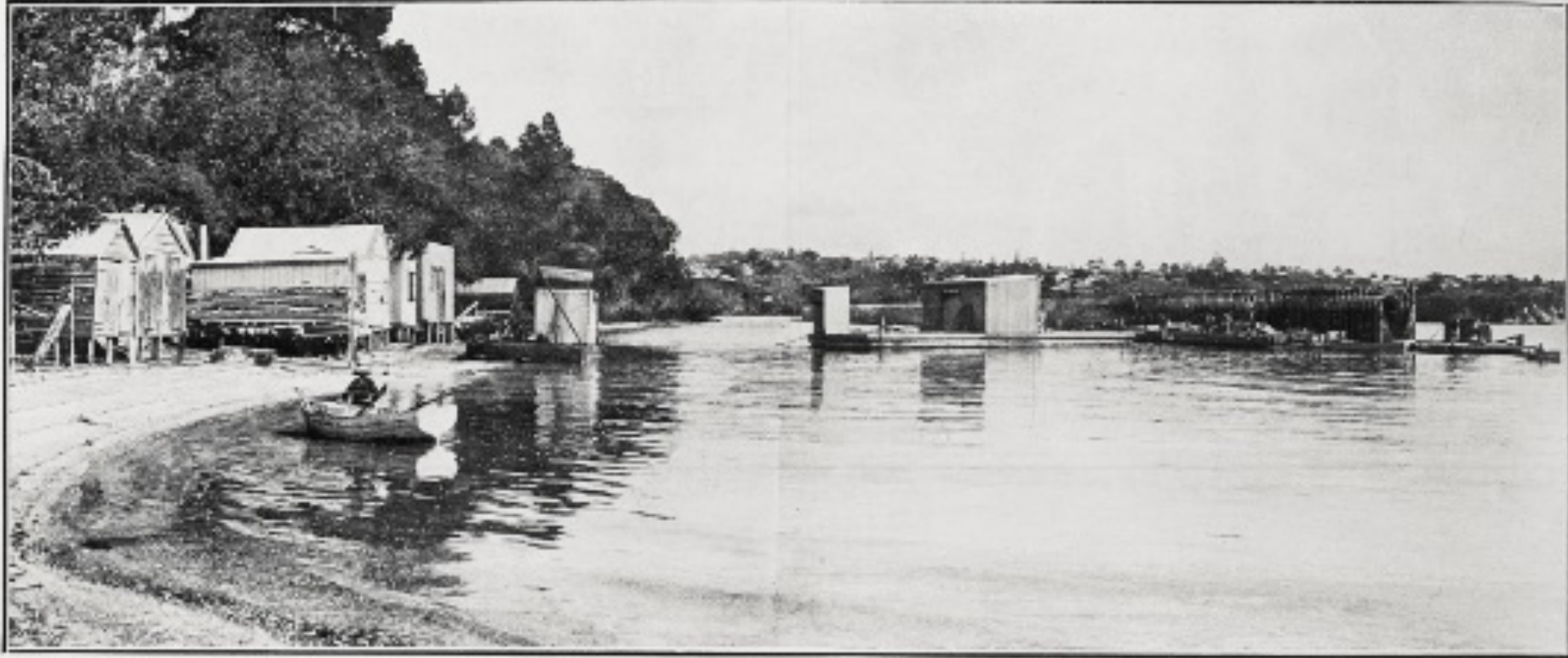
Wilson's Beach 1911 sewer line being built

Auckland Libraries Heritage Collections 1150_1



Auckland's Great Drainage Works Under Construction.

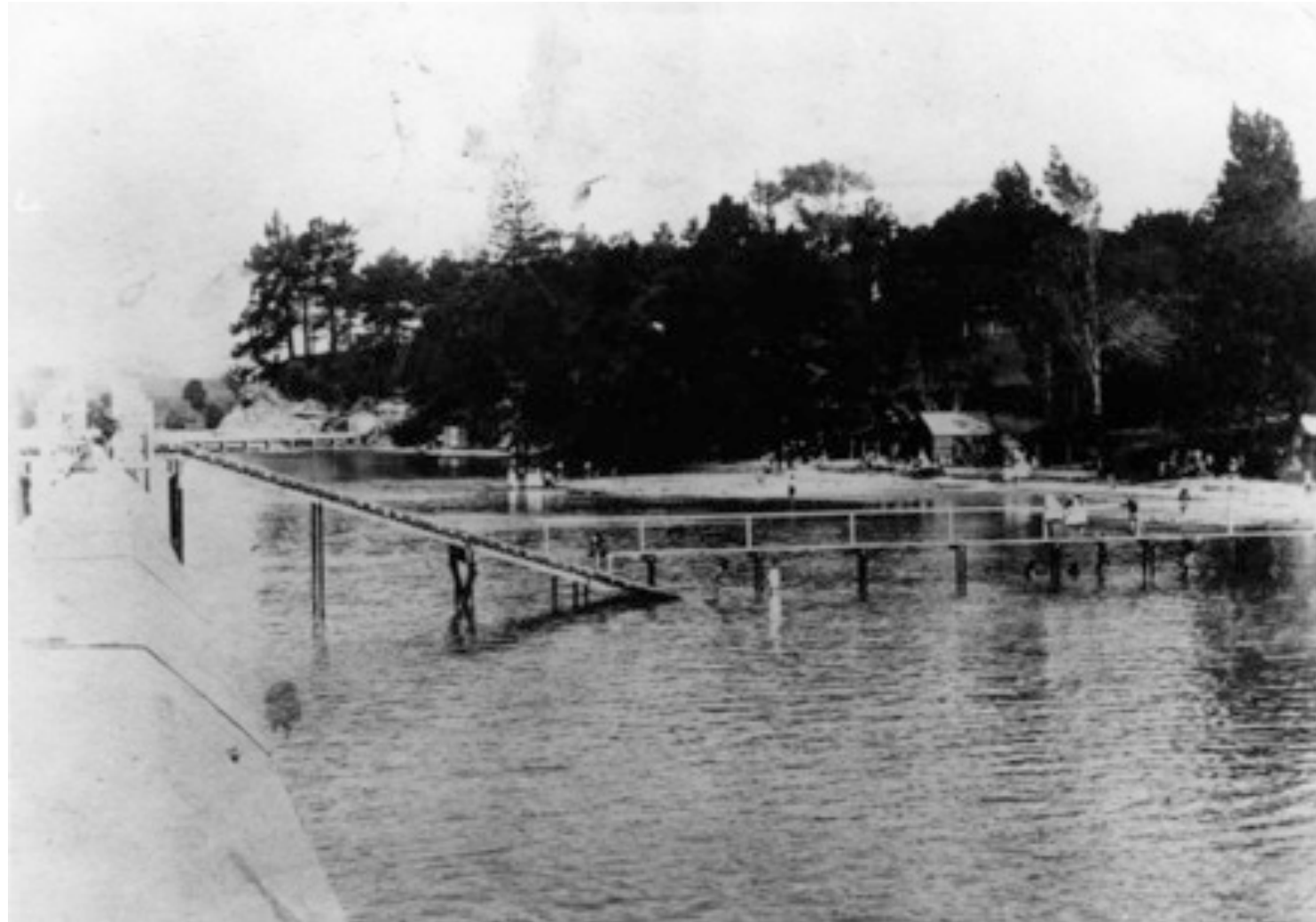
Auckland Libraries Heritage Collections AWNS-19100915-16-3



AUCKLAND'S GREAT DRAINAGE WORKS: THE NEW MAIN SEWER LINE CONSTRUCTION ALONG THE WATERFRONT OF HORNBY BAY.

Wilson's Beach. Sewer pipe on left.

Unknown, photographer, 1920s. Auckland Museum.



Group Standing On Hobson Bay Sewer. Albert Hague Jones, Photographer.

Auckland Libraries Heritage Collections AHJ-G-191



REMUERA BOATS SHOOTING THE SHUTE
WILSONS BEACH REAL PHOTO POSTCARD
Published by Wilson Photos, Auckland #4917

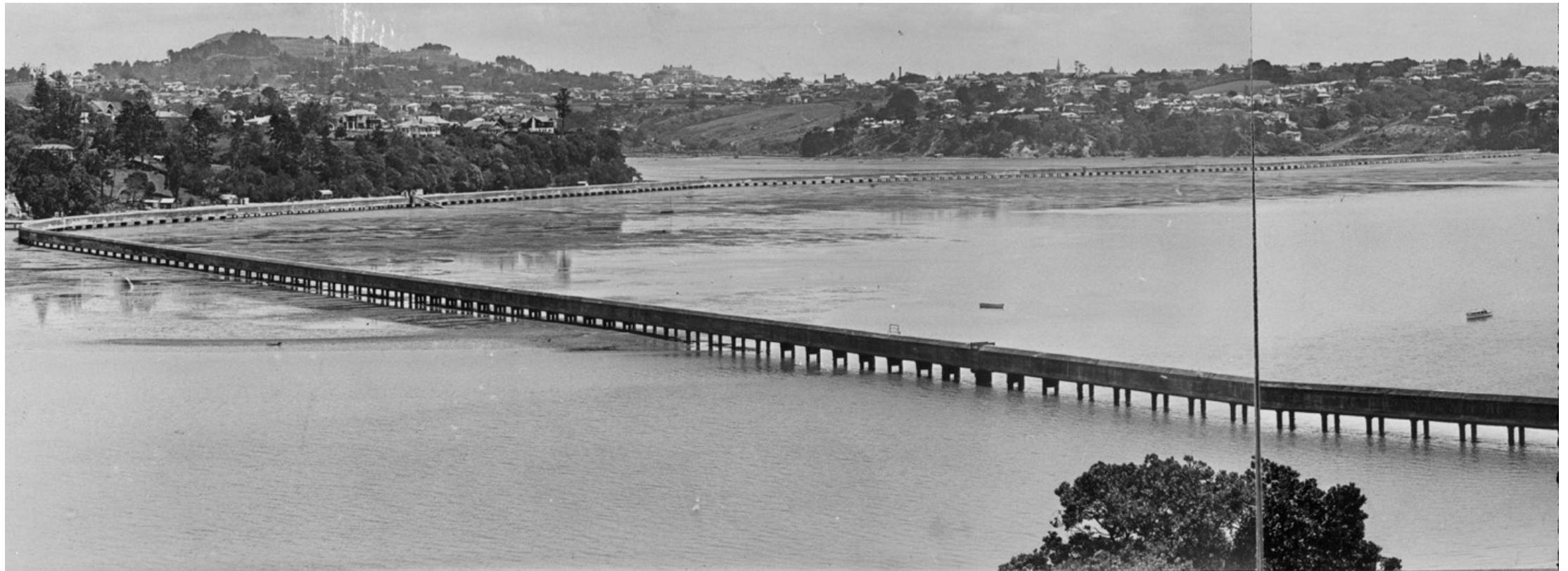


Shooting the Shute, Wilsons Beach, Remuera, Auckland 1917
Wilson Photos

Hobson Bay showing the sewer pipeline & houses in Burwood Crescent, Remuera.

Parnell-right distance; Mt Eden left distance

J D Richardson 10 Feb 1921 SGGSC 4392



Hobson Bay showing Baradene School (Centre)
Residence of Mr John Martyn Wilson /now
St Kentigern School far right.
Shore Rd far left; One Tree Hill-Mt Hobson (Centre)

J D Richardson 10 Feb 1921 SGGSC 4391



Wilsons Beach showing Hobson Bay Pipeline

J D Richardson 1921 SGGSC-5685



Wilson's Beach Hobson Bay sewer line

J D Richardson 24 May 1931

Auckland Libraries Heritage Collections 4-4498



Wilson's Beach Hobson Bay sewer line

J D Richardson 24 May 1931

Auckland Libraries Heritage Collection 4-4494



Wilson's Beach Hobson Bay sewer line

J D Richardson 24 May 1931

Auckland Libraries Heritage Collections 4-4496



Wilsons Beach Hobson Bay sewer line

J D Richardson 24 May 1931

Auckland Libraries Heritage Collections 4-4497



Wilson's Beach Hobson Bay sewer line

J D Richardson 24 May 1931

Auckland Libraries Heritage Collections 4-4499



Re-sanding of Wilson's Beach, Waitangi Day 2019



Re-sanding of Wilson's Beach, Waitangi Day 2019



WILSON'S BEACH 2019



PLAQUE OF CAPTAIN TILLY ON WILSON'S BEACH



WILSON'S BEACH 2019



WILSON'S JETTY 2019



WILSON'S BEACH HISTORY PANEL 2019



Hobson Bay walkway concept plan (Orakei Local Board)

CONCEPT DESIGN - BEACH AND BOARDWALK

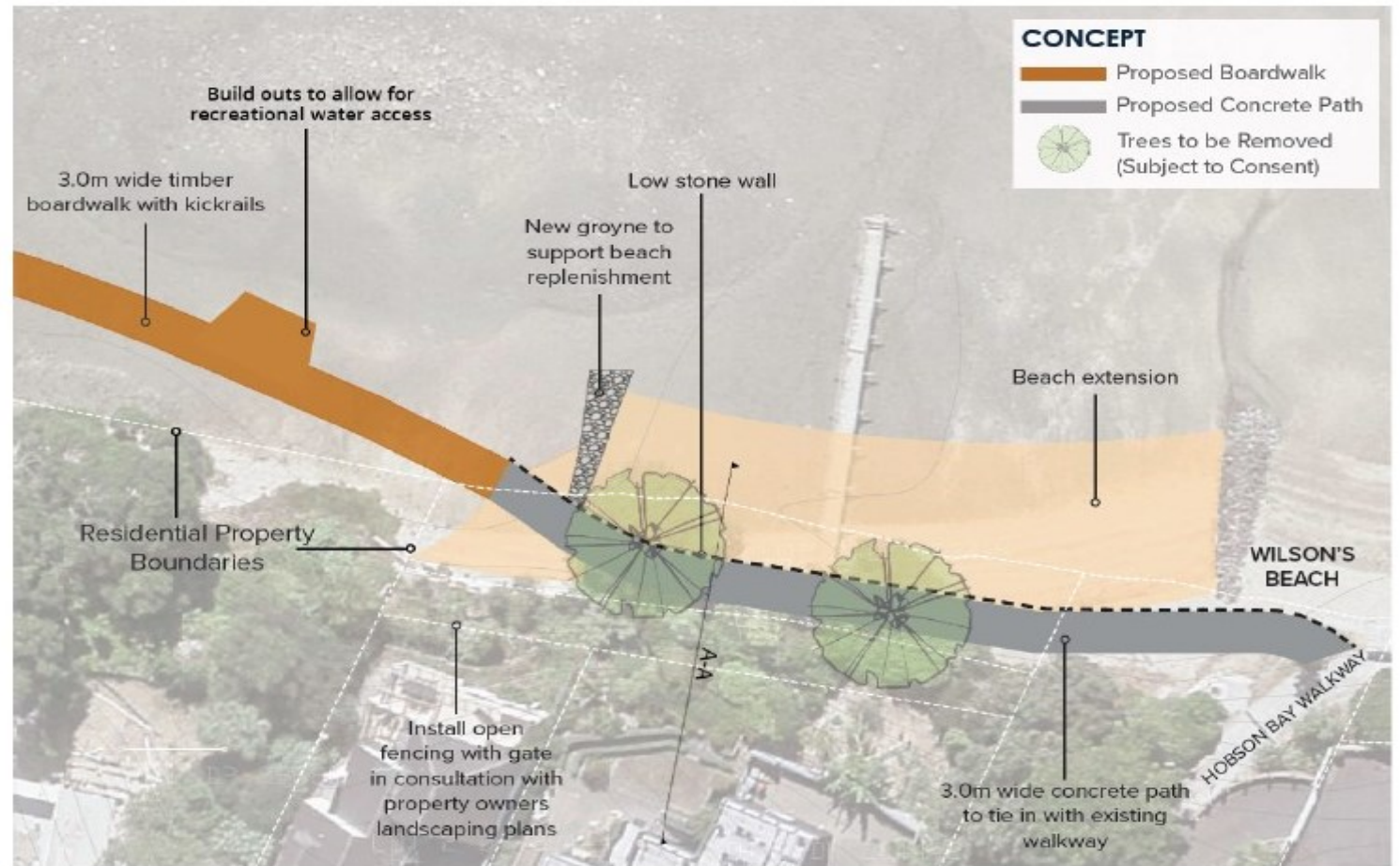
TIMBER BOARDWALK (3M WIDE) & CONCRETE PATH ACROSS EXTENDED BEACH

The 3.0m wide boardwalk is approximately 535m long, running from Shore Road Reserve to the west end of Wilson's Beach. It includes a 55m concrete path which continues from the end of the boardwalk along the berm of Wilson's Beach to connect to the existing Hobson Bay Walkway. The concrete path will allow users to traverse the berm of the new beach easily and is supported by a low rock wall which aids in preventing erosion to the bank.

The proposed path may require the removal of two mature low-lying trees (Pohutukawa and Holm-Oak) in order to achieve a practical connection to the new boardwalk. A short section of the existing timber pier will also need to be removed to allow the path connection to boardwalk.

Kickrails will be installed to the boardwalk to provide safe access along the waterway, with handrails installed where the boardwalk passes over Portland Creek at a higher level above the water.

An area of approximately 540m² of beach replenishment is proposed, directly west of the existing rock groyne and a new groyne is to be constructed to limit sediment flow and retain a functioning beach.



WILSON'S JETTY 2019

