



How to heritage list your house

Valerie Muir, 3 Otahuri Crescent

Megan Walker, Built Heritage Specialist of the Heritage Unit, Plans and Places Department, Chief Planning Office, Auckland Council

The Butler House

3 Otahuri Crescent




Harry Butler – Butler, White and Hanna

Simpson Grierson

1930s


Legal Notice in The Auckland Star 1938



Phil Hanna



Phil Hanna was appointed City Solicitor in Auckland and became something of an 'identity' in the city, performing the role for many years. During this time, local government work



Harry Butler

←

→

1887 1921 1923 1930 1956 1982-3 1985 1991 1995 Today

McGregor & Lowry later became Butler White & Hanna, which operated an extensive practice in local government law. In the 1930s, they added a local government law specialty to the practice.

Architect Llewellyn (Llew) Piper 1892-1975

- Milne & Choyce, Queen St. 1923
- 3 Otahuri Crescent, Remuera. 1931
- Berkeley Theatre, Mission Bay. 1939
- Seaside Flats, Tamaki Drive. 1939
- AEPB, Remuera Rd, Newmarket. 1951
- Auckland Harbour Bridge Authority Building. 1959

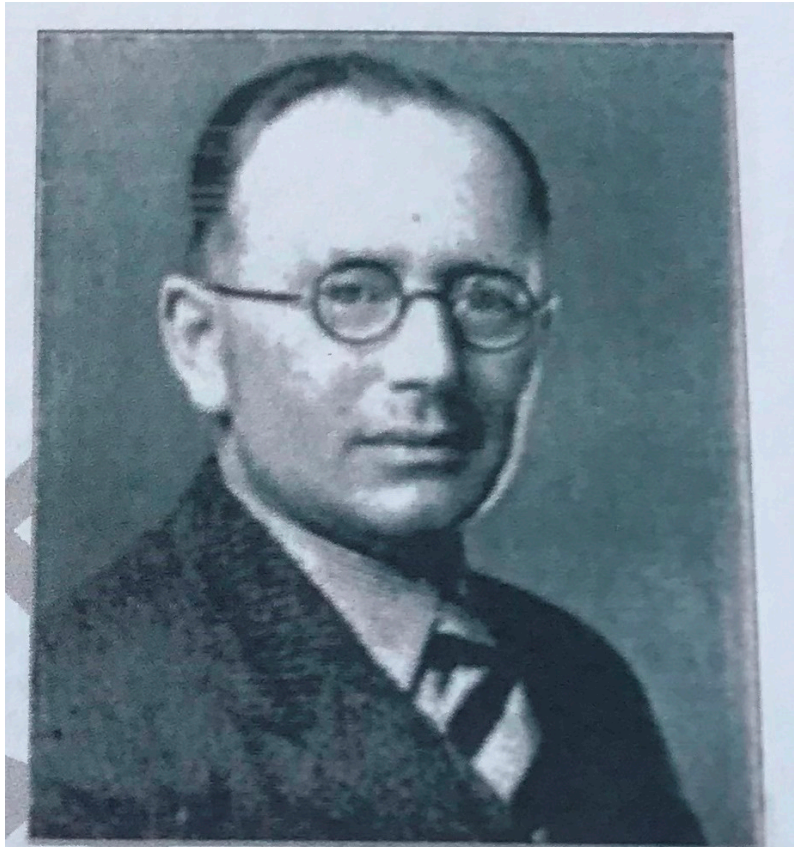


Figure 39: Llew S. Piper (Business Personalities: Mr. Llew S. Piper, *The Commerce Journal*, February 15 1936, 14).

Butler House 1931
Building Today Oct-Dec 1936









































